



NearTeam

PROXIMITY + QUALITY + COMPETITIVENESS

ENGLISH
VERSION

PROXIMITY

A senior consultant support throughout the project.

RESULTS, QUALITY

Commitment on encryption, deliverables and deadlines. Quality standards and architecture compliance.

COMPETITIVENESS

High-end at nearshore rates.



JAVA /J2EE EXPERTISE
AND PHP OPEN SOURCE

A COMPETITIVE
NEARSHORE MODEL

CONSULTING AND STEERING
ENTITY IN PARIS

HIGH QUALITY
RESOURCES

MATURE
PROCESS

EXPERTISE

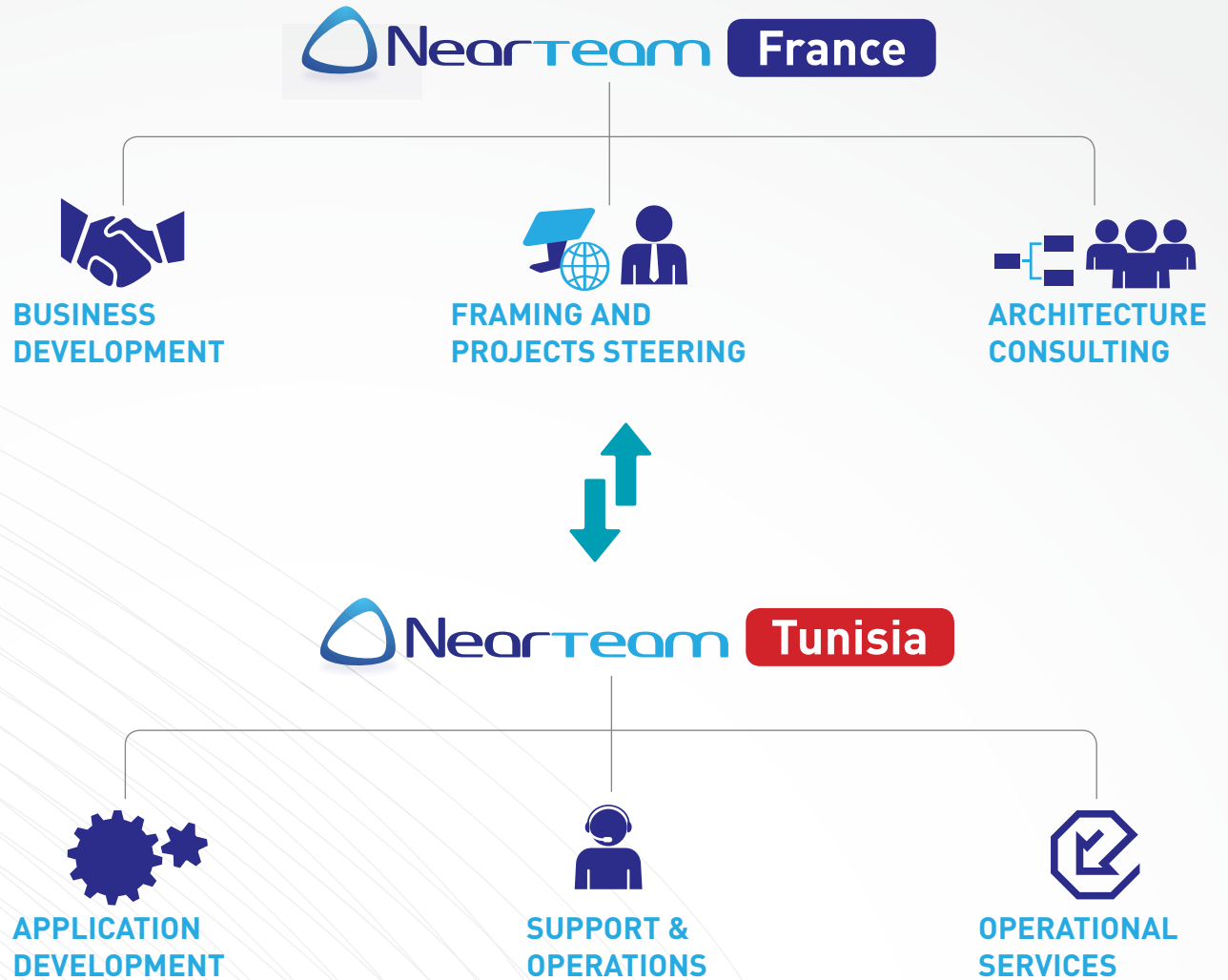
Application Architecture,
JAVA/J2EE et PHP Open source
Custom Development

INNOVATION

At the forefront of new
technologies, continuous
Research & Development (R&D)

NEARSHORE MODEL

Efficiency and Quality at lower
cost: Development center
based in Tunisia.



BUSINESS APPLICATIONS

- ▲ Web client or Heavy client
- ▲ Management Applications
- ▲ Functional complexity

JAVA / J2EE
JSP / JSF / Hibernate
Oracle / MySQL

WEBSITES / PORTALS

- ▲ Manageable site contents
- ▲ Content: Articles, Videos, functional complexity, events, entertainment newsletter, forms
- ▲ Cloud Hosting

CMS
Drupal 7, Typo 3
Joomla

E-COMMERCE

- ▲ Tailored E-Business solutions
- ▲ Dedicated solution multi-dealer platform

PRESTASHOP
Tailored, solution
Plateform

WEB 2.0
Symfony 2 / Zend
HTML5 / JQuery / JS

WEB APPLICATIONS

- ▲ Business Applications Intranet / Extranet
- ▲ SaaS applications
- ▲ Cloud Hosting



MODEL SPECIFICATIONS

COMPLEMENTARITY

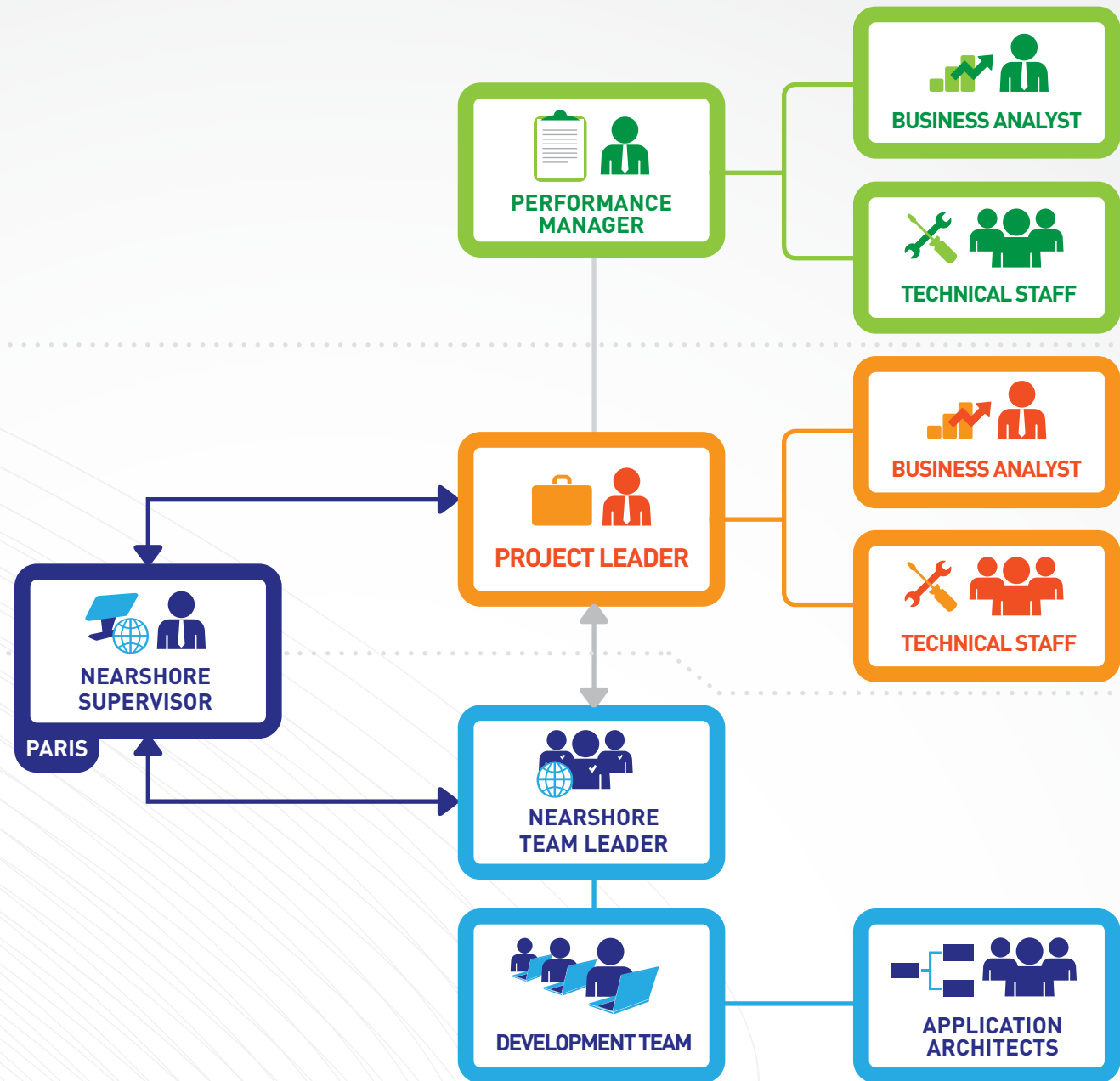
With the partner agency or web services company or SSII.

FLEXIBILITY

In resources management.

COMPETITIVENESS

A more competitive offer, improved margins, while maintaining control of the customer relationship.





MODEL SPECIFICATIONS

GLOBAL SERVICE

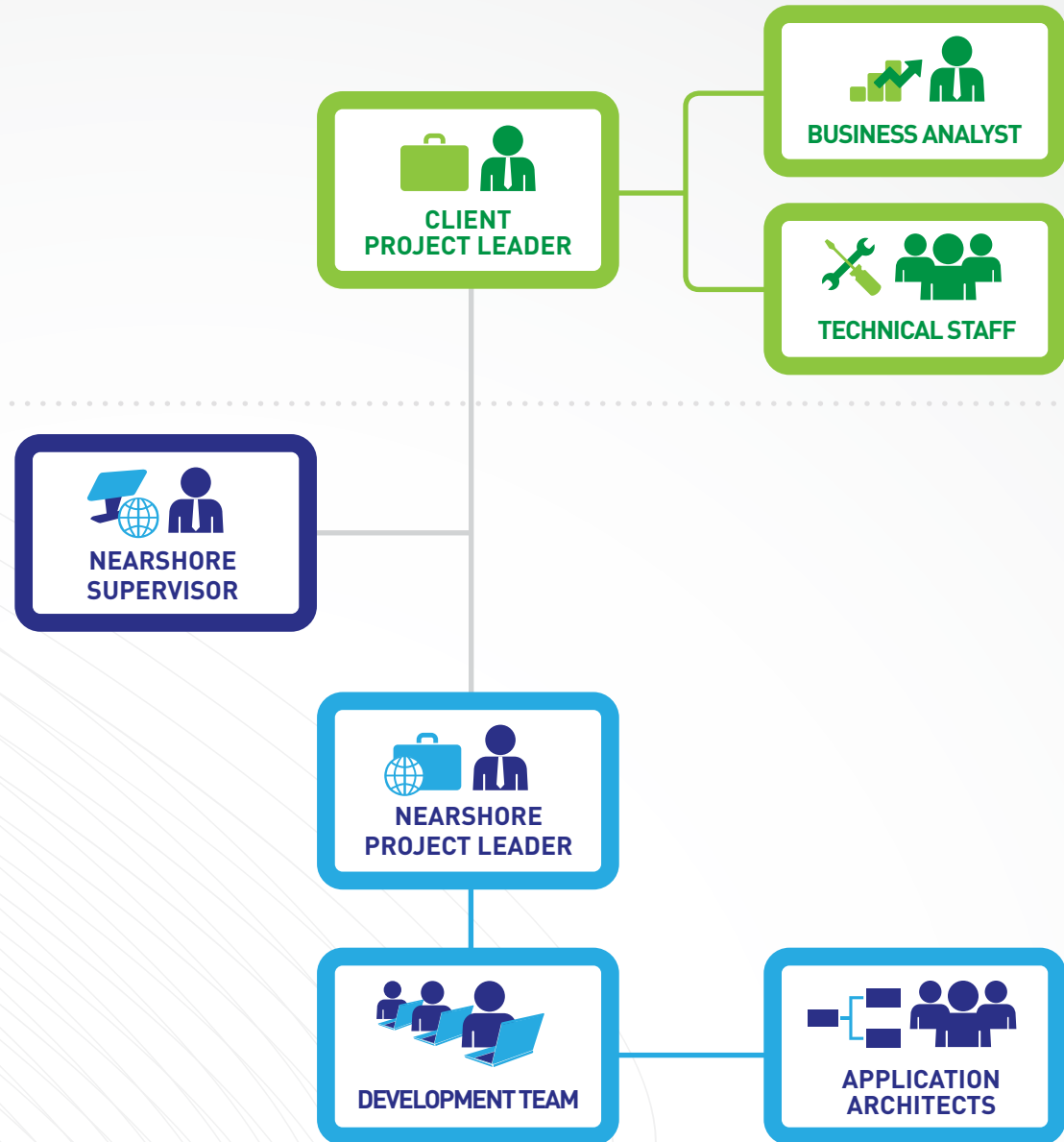
Consulting, development, support and operation.

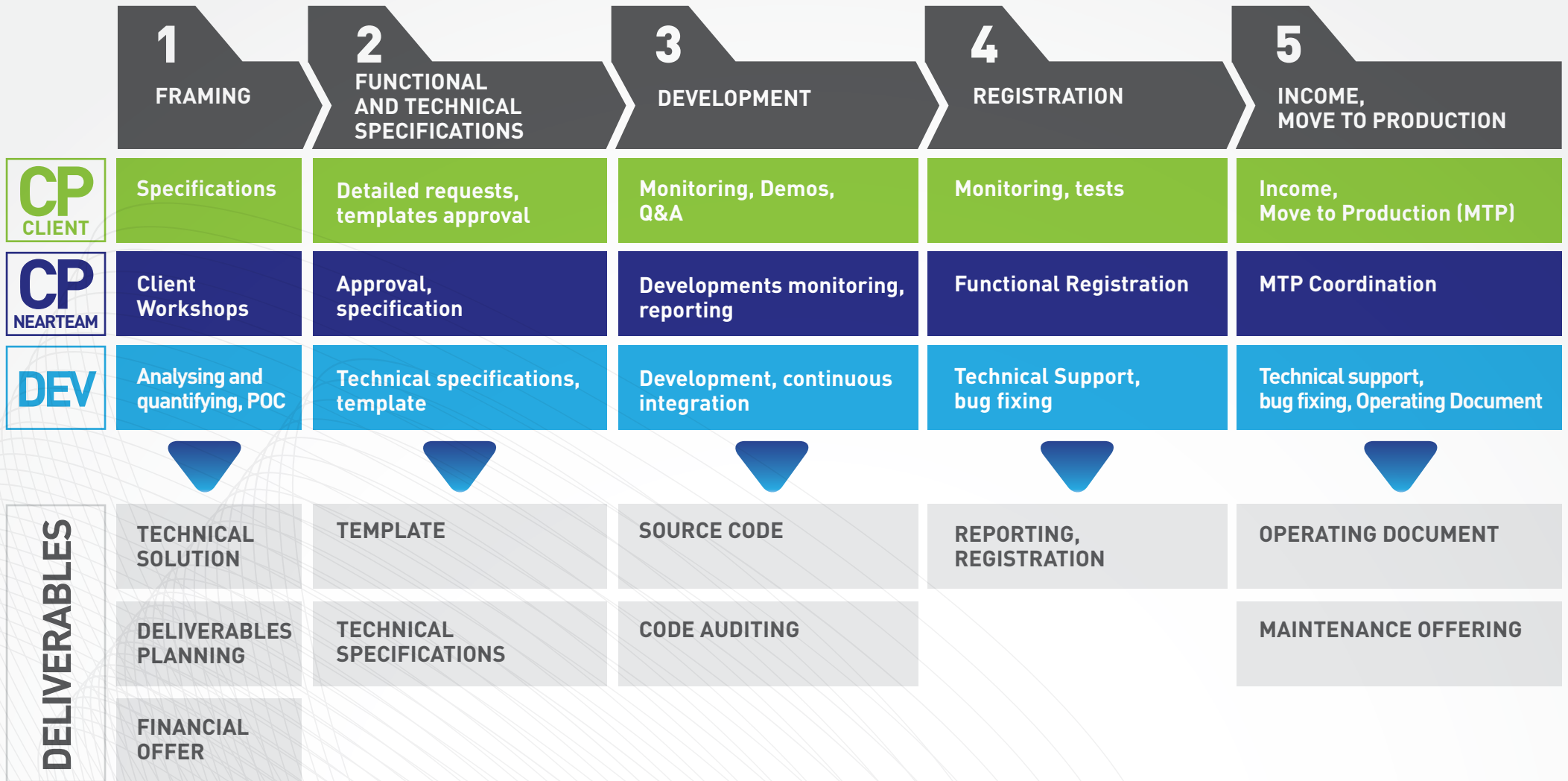
RESULTS COMMITMENT

Fixed-price on deliverables, deadlines and standards.

FLEXIBILITY

Methods and client's organization integration.







WWW.ANEO.FR

SSI in strategic partnership on fixed price projects for corporate clients in the energy, finance and transport sectors



WWW.LAFOURCHETTE.COM

The european leader of online restaurant booking, multi-projects partnership



WWW.ESI-PARIS.COM

A major player in the professional training within the well being area in France, partnership for the development and operation of a management platform of its information system



WWW.EASYVOYAGES.COM

European leader in the on-line travel booking, various fixed price projects



ESPACE OPEN

Ongoing project of a new e-commerce multi-merchant platform (such as Priceminister, Cdiscount,)
Long term partnership for the development, maintenance and operation of the platform



WWW.FW2L.COM

New player in the world of sports events in France



WWW.AFTERWORKDUBIENETRE.COM



WWW.AU24.FR

PROJECT	TYPE DE PROJET	DELIVERY MODE	TECHNOLOGY
Credit management platform	Web 2.0 application management	Partnership SSII Service center	Java / J2EE
Web based ERP customized for a training institute	Web 2.0 application management	Direct client Fixed price	PHP / Zend, JQuery / Flex
A platform of web marketing campaign settings and execution	Web 2.0 application management Developed website	Direct client Fixed price	PHP / MySQL, Symfony 2
A multi-merchant e-commerce platform	E-commerce	Direct client Fixed price	Prestashop, Customized development, Symfony2
Sport events organization web site	Dynamic website E-commerce	Direct client Fixed price	PHP / MySQL, Drupal 7, Ubercart e-commerce
Client needs and sub fleet management	Cloud enterprise application	Partnership SSII Service center	PHP / Zend, JQuery / Flash
Integration of subway supervision interfaces	Graphic integration Web owner technology	Partnership SSII Dedicated team	Graphic framework
Resources management application	Web 2.0 management application	Partnership SSII Service center	Java / J2EE, GWT
Affiliate management	Developed website E-commerce	Direct client Fixed price	PHP, JQuery
Activities indicators management	Management application Thick client	Partnership SSII Service center	C sharp.net



LISTENING TO YOU IS OUR PRIORITY

To contact our management, thank you
for sending a message to:

anis.bessa@nearteam.fr

or call us at: **06.63.00.21.32**

Website: www.nearteam.fr

LinkedIn  **viadeo** 